

# DC Fuse Holder

## EDFH series Fuse 1000V

Leading Manufacturer Protects Solar Power Safety

Rev1.0 2022/04/11



## EDFH series DC Fuse 1000V



### Product Application

EDFH series fuse holder is made of refractory material, and meets the standard of IEC 60947-3. The maximum rated voltage is 1000V and the maximum current is 30A. As a short circuit and over-current protector, it is widely used in the high and low voltage distribution system, control system, and electrical equipments, like distribution box and inverter.

### Product Benefits

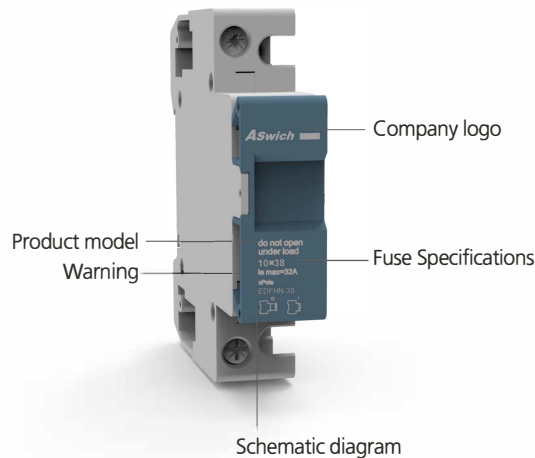
- DIN35 Rail Installation, Easy to Install
- Adjustable terminal block, Wiring firm
- Fire-retardant shell, high temperature resistance
- Flexible installation, Easy to replace

### Select Code

E	D	FH	□	-	□	/	□
1	2	3	4	5	6		

Code	Name	Description
1	<b>ASw</b> brand	E
2	DC	D
3	Product Code	FH: Fuse Holder
4	Rated voltage	N: 1000VDC
5	Rated current	30: 30A
6	Pole	1:1P 2:2P

### Appearance Introduction



# DC FUSE HOLDER

## EDFH series Fuse 1000V

### Technical Data

<b>PV DC EDFH Fuse Holder Pole</b>	<b>1P</b>
According to	IEC 60947-3

#### Electrical Characteristics

Rated Working Voltage	1000V DC
Rated Current	30A
Breaking Capacity	20kA
Max Power Dissipation	3W

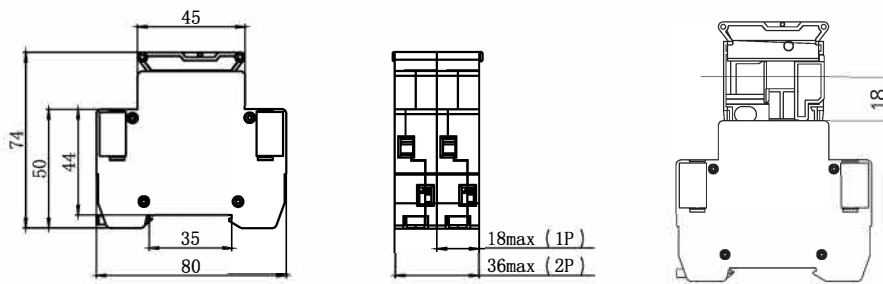
#### Control and Indication

Connection and Installation Wire	2.5mm <sup>2</sup> - 6.0mm <sup>2</sup>
Terminal Screws	M3.5
Torque	0.8~1.2N·m
Degree of Protection	IP20

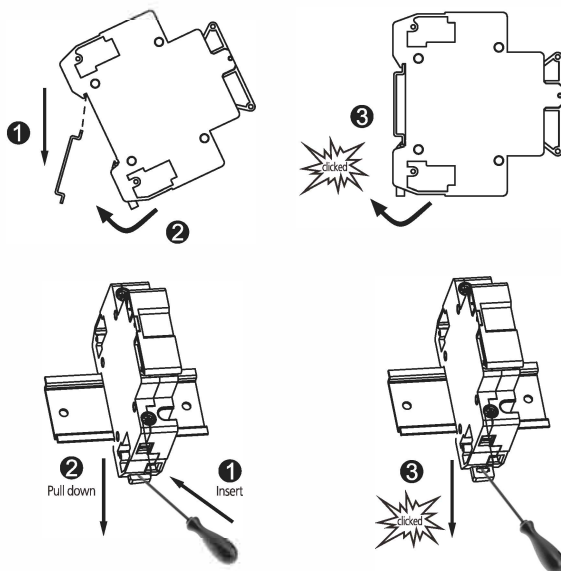
#### Installation Environment

Fuse Size	10x38mm
Operating Temperature Range	-30°C~+70°C
Mounting	DIN rail IEC/EN 60715
Pollution Degree	3
Relative Humidity	+20°C ≤95%, +40°C ≤50%
Installation Class	III
Weight	0.07kg Per pole

### Dimensions



### Installation



### Replacement Fuse

